

Thru-Hull Scuppers

Adjustable Thru-Hull Scupper

Material: Molded Polymer, Recessed Soft Black Flapper
 Finish: White
 Surface Thickness: 2" to 4-3/4"
 Features: Female portion of scupper can be cut down by one rib for each 1/4 inch difference between hull thickness and 4-3/4 inches.

I.D.	Mounting Hole Dia.	O.D. Flange	Retail Pkg.	OEM Bulk Pkg.
1-11/32"	1-13/16"	2-15/16"	0343DP	0343

Spare Flapper: 0333DP099A

Fig. 0343

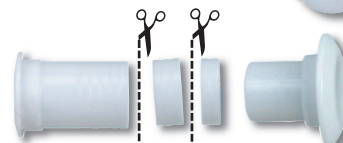


Illustration shows sections of ribs cut out to adjust for various surface thicknesses.



Transom Mount - Thru-Hull Scupper for Use with Hose*

Material: Molded Polymer, Recessed Soft Black Flapper
 Finish: White
 For Hose Sizes: 1-1/2"
 Max. Hull Thickness: Up To 2-1/8"
 Features: Nut and Mounting Hardware Included

Mounting Hole Dia.	O.D. Flange	Retail Pkg.	OEM Bulk Pkg.
1-7/8"	2-7/8"	0323DP	0323

Spare Flanged Nut See Fig. 0326, on page 105. Spare Flapper: 0323DP099A



Fig. 0323



Transom Mount - Thru-Hull Scupper for Use with Hose*

Material: Molded Polymer, Recessed Soft Black Flapper
 Finish: White
 For Hose Sizes: 1-1/2"
 Max. Hull Thickness: Up To 3-1/4"
 Features: Nut and Mounting Hardware Included

Mounting Hole Dia.	O.D. Flange	OEM Bulk Pkg.
1-7/8"	2-7/8"	0327

Spare Flanged Nut See Fig. 0326, on page 105. Spare Flapper: 0323DP099A



Fig. 0327



Transom Mount - Thru-Hull Scupper for Use with Hose*

Material: Molded Polymer, Recessed Soft Black Flapper
 Finish: White
 For Hose Sizes: 1-1/2"
 Max. Hull Thickness: Up To 2-1/8"
 Features: Nut Included

Mounting Hole Dia.	O.D. Flange	Retail Pkg.	OEM Bulk Pkg.
1-7/8"	3"	0333DP	0333

Spare Flanged Nut See Fig. 0326, on page 105. Spare Flapper: 0333DP099A

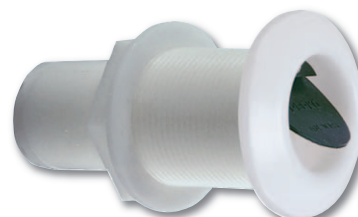


Fig. 0333



*NOTE: Thru-Hull Connections For Use With Hose Are Not Recommended For Use Below The Waterline Per A.B.Y.C. "Safety Standards For Small Craft" Section H-27.