

Thru-Hull Connections

Thru-Hull Connection for Use with Hose*

- Material: Cast Bronze
 Finish: Chrome Plated or Plain
 For Hose Sizes: 5/8" to 2"
 Max. Hull Thickness: Up To 2"
 Features:
- Flange is Machined to Fit Hull and Grooved to Retain Bedding Compound.
 - Neck is Threaded to Approximately 3/16 Inch From Flange.

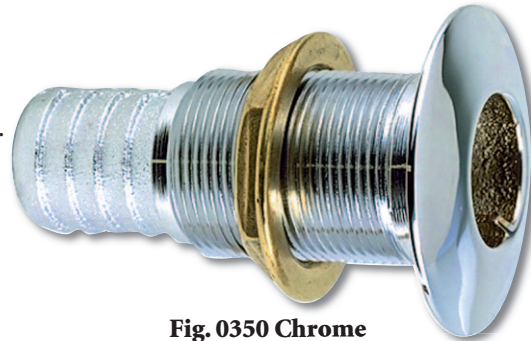


Fig. 0350 Chrome

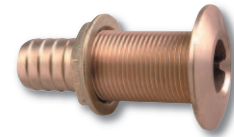


Fig. 0350 Plain

Hose Size	Mounting Hole Dia.	Max. Hull Thickness	O.D. Flange	Plain Bronze		Chrome Plated Bronze	
				Retail Pkg.	OEM Bulk Pkg.	Retail Pkg.	OEM Bulk Pkg.
5/8"	13/16"	1-1/16"	1-1/2"	0350004DPP	0350004PLB	0350004DPC	0350004CHR
3/4"	1"	1-5/8"	1-7/8"	0350005DPP	0350005PLB	0350005DPC	0350005CHR
1"	1-5/16"	1-3/4"	2-1/4"	0350006DPP	0350006PLB	0350006DPC	0350006CHR
1-1/8"	1-5/16"	1-3/4"	2-1/4"	035006ADPP	035006APLB	035006ADPC	035006ACHR
1-1/4"	1-5/8"	1-7/8"	2-3/4"	0350007DPP	0350007PLB	0350007DPC	0350007CHR
1-1/2"	1-7/8"	1-7/8"	3-1/8"	0350008DPP	0350008PLB	0350008DPC	0350008CHR
2"	2-3/8"	2"	3-3/4"	-----	0350009PLB	-----	0350009CHR



Illustration Of Bedding Groove

Spare Flanged Nut See Fig. 0075, on page 105.

*NOTE: Thru-Hull Connections For Use With Hose Are Not Recommended For Use Below The Waterline Per A.B.Y.C. "Safety Standards For Small Craft" Section H-27.



Thru-Hull Connection for Use with Pipe - Flush Mount

- Material: Cast Bronze
 Finish: Plain
 For Pipe Sizes: 1/2" to 2" NPT/S (See Page 96)
 Max. Hull Thickness: Up To 3-3/8"
 Features: The exterior surface of the flange is machined flat and designed to be countersunk into the hull, resulting in a smooth external fit with no raised portion to increase drag.

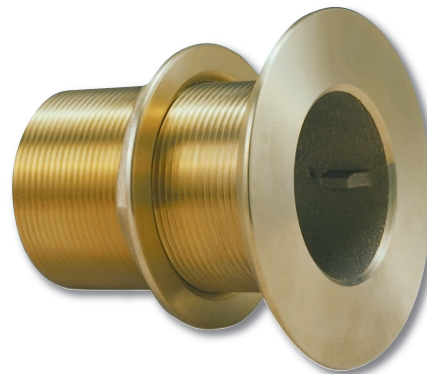
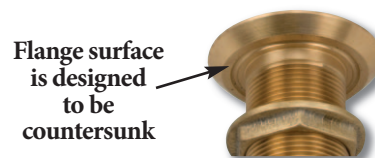


Fig. 0331

Pipe Size	Mounting Hole Dia.	Max. Hull Thickness	O.D. Flange	Retail Pkg.	OEM Bulk Pkg.
1/2"	13/16"	2-3/16"	1-11/16"	0331DP4PLB	0331004PLB
3/4"	1"	2-3/8"	2"	0331DP5PLB	0331005PLB
1"	1-5/16"	2-9/16"	2-1/4"	0331DP6PLB	0331006PLB
1-1/4"	1-5/8"	2-15/16"	2-7/8"	0331DP7PLB	0331007PLB
1-1/2"	1-7/8"	3-1/16"	2-31/32"	0331DP8PLB	0331008PLB
2"	2-3/8"	3-3/8"	3-7/8"	-----	0331009PLB



Spare Flanged Nut See Fig. 0075, on page 105.

6 Underwater Hardware